

Ambica Business Intelligence



From reports, through complex interactive control panels up to advanced analytics, you can create and share everything through organizations within single, integrated environment.

We have created a great tool to help you use BI as you wish, whether you are a top manager, a finance director, a business analyst, or you only need relevant information for your job.

Compact Business Intelligence Business Platform



Ambica BI is a configurable application solution that covers a wide range of information needs for managers, analysts, and other information workers.

Integrated designer tools make allows any user to create fully interactive BI panels, analyzes and reports for Windows, Web and mobile devices without writing a single line of code.

The Microsoft Office-inspired user interface provides a user-friendly environment that simplifies all aspects of data connectivity, data handling, output creation and user interface

customization, so you can prepare professional, useful and impressive outputs in record time.

Through them, you get the key support for faster and better decision making.

Create a flexible decision support solution and provide administrative panels that properly inform managers and users across your organization.

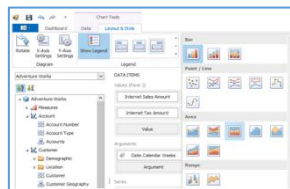
An interactive control panel typically consists of several different types of objects that can be attached to different data for which their properties and behavior can be adjusted. It is possible to publish a variety of information from the organization and its surroundings so that they have complete and immediate service of relevant information.

Create panels with an integrated dashboard designer

The basis of the design of the control panels is a wizard that makes the usage simple by creating a basic link between the designed panel and the source data.

Enter the data source and the designer will take care of everything else

The designer lets you focus on what's most important to your data. It has been designed to give you more time for analysis and data, less time to customize the user interface and make your work as productive as possible. With its tools, you can create a panel data source with an integrated data source and simply drag the desired field into the data visualization view area.



Analyze and recognize trends by searching and filtering data



Each object used in the dashboard can immediately provide insight to your data. Control panel objects can filter series, arguments, and even filter data from other data sources. These filters (enabled with a single click) allow you to control a dataset visualized across the entire control panel or its defined part.

In addition to filtering between panel objects, the object can also provide a feature to scan visualized items according to pre-set rules.

Choose from many professional, useful and impressive visualizations

The user can choose from a variety of interactive objects to design, which can be controlled individually or in defined groups by using different filter types.



When creating each of the dashboards, the user is offered all the connected data sources and models (there is also menu offering new connection) from which they can assign selected entry to the object data fields. In addition, there are several tabs, specifically for each type of object, allowing you to customize the visualization, behavior, and dependence of the object on the surroundings.

- **PivotTable** - Display the values of one or more measures according to the dimensions of the axis tables
- **Table** - unlike the Pivot table, only one "dimension" is available, and the rows that return the query are for the fixed columns. These columns can accommodate both dimensions and measures and their function (eg Delta analysis or minigraph). The table can also work as a filter, allowing the result of one data query to be used as an entry to the next query
- **Graph** - A number of different types of customizable visual objects
- **Gauge/performance metrics** - Visualized KPIs (ie reality vs. target values of specific pointer and their various comparing methods)
- **Performance card** - another graphical form of KPI visualization



- **Treemap/Performance Map** - Visualization of hierarchical data (categories and their subcategories) in the form of a temperature map with the choice of a suitable algorithm
- **Cartogram/choropleth map** - a map with subdivisions in which are displayed area-related data

Key features

Compact enterprise BI platform

Everything is available within one application - design and viewing tools, reports, analytics, and control panels as well as licensing, users, and their rights to functionalities and outputs.

Intuitive design of outputs

Part of the Ambica BI solution is an intuitive designer able to create a report, analysis, or control panel within minutes. There are a number of easily customizable objects from different types of tables and charts, through performance indicators and KPI slides, to interactive maps and advanced filter types.

Content available from anywhere

The user can access reports, control panels and analyzes via desktop and web clients as well as mobile devices

Advanced and impressive data visualization

An extensive library of customizable graphic components makes it easy to design impressive business data visualizations.

Visualizes data from various sources

Ambica BI can present data from SQL Server analytical models (multidimensional and tabular), relational databases of different vendors as well as structured files (such as Excel).

Definition of own calculations and models

Users can extend data models with their own calculated elements and measures, or even create their own analytical models over data sources.

Planning and business models

If you are thinking about supporting planning processes or financial and business reporting, you do not have to look for other applications and vendors.

Integral components of Ambica BI include special Plan4S planning support as well as financial, business and logistics models.

In one environment, you can plan, set business rules for automated planning or real-time allocation, evaluate plan fulfillment, or report and perform analyzes based on built-in business models or custom models.

Integration of BI into business processes

The platform also allows integration of outputs into other applications. Workers at all levels of control can then display the required BI information directly in another business application.

Simplicity and clarity

Unlike many other platforms for analyzing and presenting data, Ambica BI is optimized just for this purpose. The result is maximum clarity, simplicity and intuitiveness of controlling all platform components.

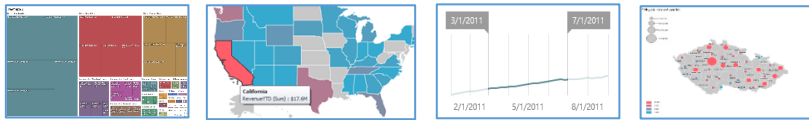
Easier access to BI

Ambica BI fundamentally simplifies user's access to Business Intelligence. It moves the implementation of BI solutions from developers closer to analysts and consultants to the vendor and target organization workers, which makes it easier, faster and cheaper to implement BI solutions.

Ambica Business Intelligence



- **Geo point map** – a map visualizing various data by methods that relate to specific points on a map determined by GPS coordinates
- **Filter** - different types (eg list, drop-down list or element tree) with the choice of only one element or multi-select. You can filter both dimension and pointer values.
- **Range filter** - graphical selection of the element or value interval, for example, allows filtering by scrolling the "slide" on the axis



- **Image** - image visualization dynamically selected based on selected values of (dimensions/measures)
- **Text field** - predefined text with variables, such as pointer value

Lightning fast, fully customizable analyzes with built-in OLAP support

The Analytic Client allows you to convert difficult-to-analyze and interpretable data into a compact, aggregated and visualized information. Fully customizable analysis design ensures that the user can visually modify any layout to examine data from multiple perspectives.

Pivot table

The basis is a PivotTable similar to the Excel service designed for multidimensional data analysis. It has the ability to easily and intuitively build a custom query, whose definition, including a complete display format, can be saved among other types of outputs and shared with other team members. The analytical client supports displaying in the form of a PivotTable, chart, and their combinations.

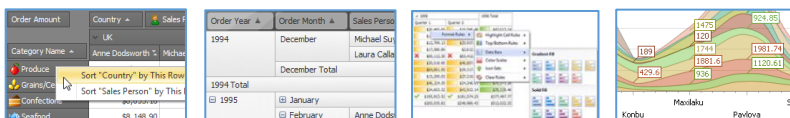
Category Name	Product Name	Quantity	Extended Price	Quantity	Extended Price
Beverages	Chai	49	\$675.20	43	\$1,102.40
	Chang	140	\$1,536.40	72	\$1,102.40
	Chai Fruite Verte	46	\$608.20	30	\$398.40
	Citrus de Bleau	139	\$25,127.36	79	\$19
	Guaranik Perlatissimo	90	\$172.80	205	\$1,102.40
	Ipoh Coffee	20	\$736.00	118	\$5
	Lakshmi	87	\$1,145.82	82	\$1
	Laughing Lumberjack Lager	37	\$1,102.40	37	\$1,102.40
	Outback Lager	93	\$1,076.46	99	\$1,102.40
	Horsholt Winterbier	28	\$125.52	862	\$1
	Serraquatch Ale	30	\$291.20	45	\$1,102.40
	Pilsener Stout	173	\$2,260.00	99	\$1

Supports "concurrent" work on multiple sheets/tabs of the application. At the same time, however, it allows connection to different source analytical or relational databases or models on individual sheets.

Analytical features and advanced visualization

A number of options to customize the layout provide complete control over the user interface and unrivaled user features make it easy to use.

- Support for OLAP, relational databases and models
- Asynchronous data processing
- Integrated set of tools for drilling, visualizing, printing and exporting
- Grouping values and displaying hierarchical data
- Aggregate and Sort Data
- Simple and advanced element filtering and value filtering
- Excellent inspired conditional formatting
- Advanced analysis tools, such as the breakdown of the selected value in the detail table by any available dimensions (drill-across)
- Numerous customizable visualizations from common chart types to advanced visualizations like Bubble, Funnel, Radar, Polar, Gantt, etc ...



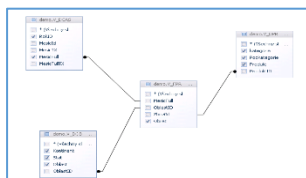
Reports

As with control panels or analytics, the reporting designer makes it easy for you to create your own reports. The data connection wizard is used to connect to the desired data source. For quick creation of a classic report, again, a simple guide is used which will help in basing the design of your own report structure including the design of groups that provide the required subtotals.

Of course, AMBICA BI supports export to common formats and print and distribution of emails.

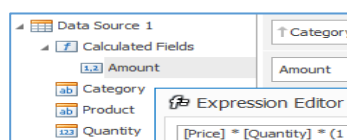
Data and models

To create new outputs of any type, you need to have a data source or model attached. The data source can be the relational database (different vendors) of the analytical database/OLAP cube of Microsoft (multidimensional and tabular) or a structured data file (e.g., CSV).



Models are one of the ways to prepare a relational data source for use in analyzes, dashboards, or reports. The data model is actually the relational mart data created over the relational data source using the model graphic designer. This allows the model to intuitively select tables and their items, define relationships between them, advanced filtering of data entering the model, and setting various aggregation functions and data formats in the model.

It is also possible to enrich the model with new fields, derived or calculated using the "Expression Editor". The result is a virtual multidimensional cube with measures, dimensions, and hierarchies that the user can handle in the same way as a traditional OLAP cube.



Rights management

Complete output rights control allows you to define a set of rights to a particular dashboard/analysis/report to the level of the user or group of users.

Architecture - desktop and web

When installing, the system creates a central metadata database, which it then uses as a repository for defining and organizing all outputs, for licenses, users and access rights, and for other service information. Through this metadata database, all Ambica BI users can share information and access to outputs and data.

Solution users can access predefined outputs created in Ambica BI Designer in both the Windows Desktop Viewer and the Web Access Viewer.

Technical assumptions

- **The metadata database**
 - SQL Server 2012+ Express Edition +
- **Desktop**
 - Windows Server 2008+ (.NET Framework 4.5.2+) for server installation
 - Windows 7+ for desktop client, .NET Framework 4.5.2+
- **Web**
 - Microsoft Internet Information Server (IIS) 7.+, .NET Framework 4.5.2+ for Ambica BI web server
 - Web Browser (Verified for Internet Explorer 9+, Mozilla Firefox 2+, Google Chrome 1+, Opera 9+, Microsoft Edge)

Licensing

- Ambica Business Intelligence is licensed to Named Users. Any user who accesses the data through one of the components of Ambica BI must be the administrator in the user list.
- There is a special admin license, license for designers of reports, analyzes, designers and licenses for desktop and web users of all types of outputs (viewer).
- The Starter 1 + 5 license set consists of one administration and design license and five viewers.

How to do it

If you are interested in Ambica BI, you can take a closer look at our website at the Technology section of Ambica Business Intelligence. However, if you do not have the scope of the published product information, you can contact us at our email address ambica@ambica.cz at +420 384 390 700 if you are interested in an individual presentation or in consultation with the possibilities of using AMBICA BI in your company Or via the contact form on the Ambica website.

